

Quasar

EPC Project Support Whenever You Need It.



Corporate Data
Quality Management

About us | EPC partner since 1994

Quasar has been a trusted **EPC partner** to clients since 1994, working to efficiently solve complex challenges while contributing to some of the most successful processing facilities worldwide.

WHAT WE DO

- Project Management Support.

OUR STRENGTHS

- +25 Years Experience.
- Reliable & Trusted partner.
- Know How & Technologies.

OUR MISSION

- Cut out time through process optimization and accurate measurement.
- Stay compliant and standardized.





Corporate Data
Quality Management

Project Planning & Control

- Advise on and monitoring critical pathways with Primavera, Tilos and MS Project.
- Provide the most up-to-date picture possible of the project's progress.
- Alert the project management in the event of any major deviations from the schedule.
- Coordinate progress and interfaces between the various project disciplines.

WHAT WE DO

- Process technical, financial and staffing information, making connections and presenting the data in the form of transparent reports and diagrams.
- Work with the Risk Manager producing an accurate picture of the scheduling uncertainties so that the agreed milestones can be achieved.



Corporate Data
Quality Management

Document Control | Technical Secretariat

- Document Origin.
- Templates, Logos & Title Blocks.
- Document Life Cycle.
- Internal/External Document Origin.
- Document Taxonomy.
- Document Types Disciplines.
- Document Numbering System.
- Managing Deliverable/MDR.
- Attributes of Master Document Register.
- Transmittal Log
- Attribute of Transmittal Log.

WHAT WE DO

- ✓ Ensuring Quality.
- ✓ Revision Control Issue Status.
- ✓ Document Review Flow Process.
- ✓ Approvals.
- ✓ Document Distribution Matrix.
- ✓ Master, Controlled, Uncontrolled and Superseded Documents.
- ✓ Electronic Filing Structure Naming Convention.
- ✓ Interactions with Engineering Team & Project Managers.
- ✓ Tracking & Expediting.
- ✓ As-built & Final Documentation.
- ✓ EDMS integration & Dashboards.



Corporate Data
Quality Management

Procurement | Main Pre & Post-Order Activities

- RFQ based on Project's requirements.
- Vendor's qualification & selection.
- Review of all RFQ received.
- Selection of best proposal / prepare LOA & PO.
- PO Payment Terms & Conditions.
- Invoice Quality Check.

WHAT WE DO

- Execution and monitoring of expediting activities.
- Support of Inspection activities.
- Compliance of QA requirements.
- Project schedule support.
- Progress and cost control in real time.

Stakeholders

- ✓ Procurement officers, end users, departmental heads.
- ✓ Procurement managers.
- ✓ Procurement team and evaluation committee.
- ✓ Inventory managers, requisitioners and vendors.
- ✓ Auditors.



Corporate Data
Quality Management

HR Management Support

Employee Onboarding

Walk new employees through a consistent, accurate onboarding experience.

Employee Offboarding

Make sure that critical steps in separating an employee from the organization are handled expediently and properly.

Performance Reviews

Replace Word docs and paper-based tools with an online, automated performance review process including key approval and review touchpoints.

Travel Requests

Provide employees with a simple form that gathers proper approvals and routes information where it needs to go, whether to an individual or a system of record.

Leave Requests

Ensure accurate capture of approvals and dates related to employee leave requests, with complete, traceable documentation for compliance.

Time Sheet Approvals

Employees and contractors can instead submit and track time sheet submissions as they route through the approval process.

Applicant Hiring and Screening

Capture information, trigger external processes, elicit approvals, and track the process from beginning to end.

Employee Training and Development

As part of an onboarding program or independently, automating the workflow for training initiatives provides both a systematic and trackable system for ensuring employees move consistently through a module-based series of sessions.

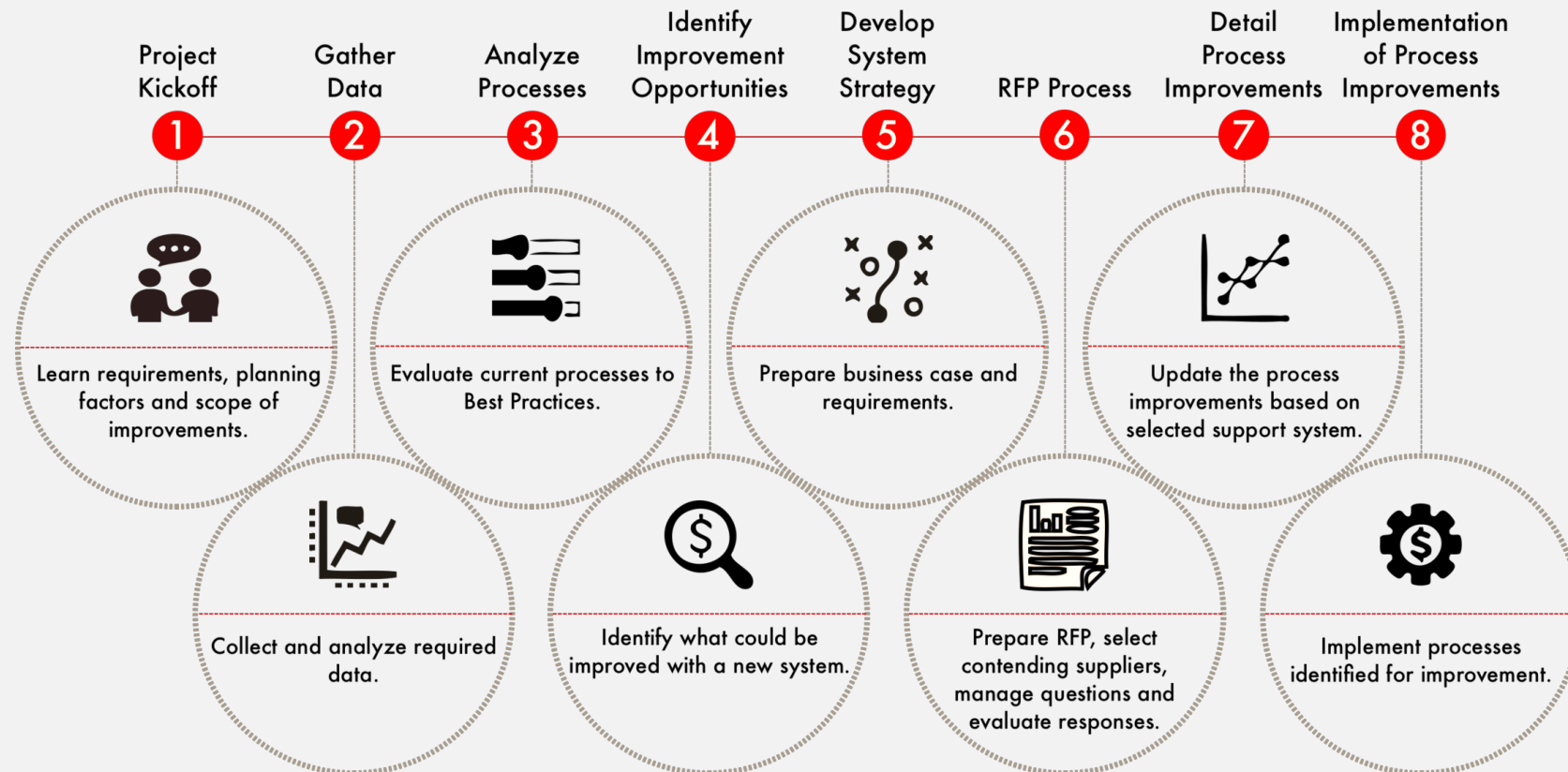
Documentation Requests

Managers and supervisors who need copies of their staff's personnel files or other documentation can easily request them from a central portal with any required approvals included in the process.



Corporate Data
Quality Management

Supply Chain Management Support



We guarantee the reliability of the flow and of the exchange of information.



Corporate Data
Quality Management

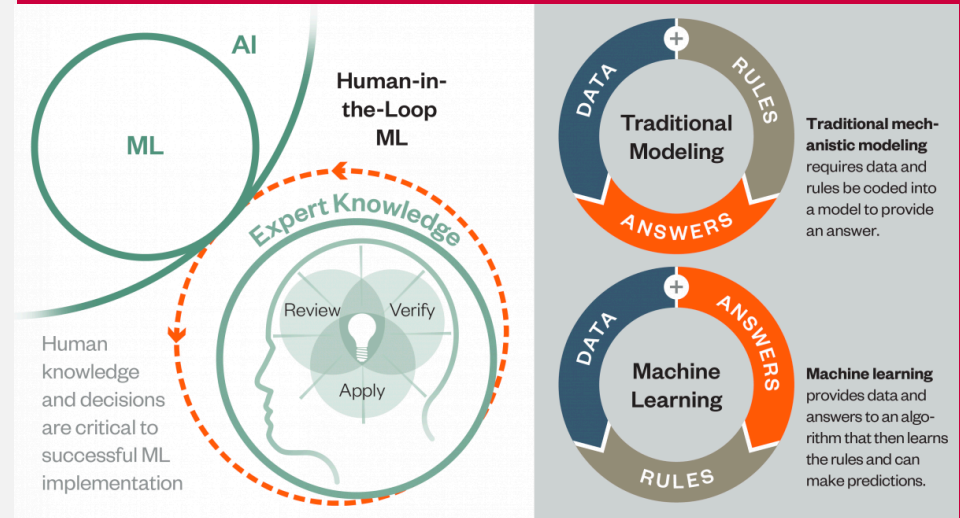
Data Management Process

Most machine learning models rely on data that has been prepared by humans. But the interaction between humans and machines doesn't stop there – the most powerful systems are set up such that they allow both sides to interact continuously through a mechanism commonly referred to as "Human in the loop" (HITL).

HITL aims to train an accurate prediction model with minimum cost by integrating human knowledge and experience. Humans can provide training data for machine learning applications and directly accomplish some tasks that are hard for computers in the pipeline with the help of machine-based approaches

HUMAN IN A LOOP DESIGN PATTERN FOR

Supervised Machine Learning Classification



MANAGING TEAMS AND ML



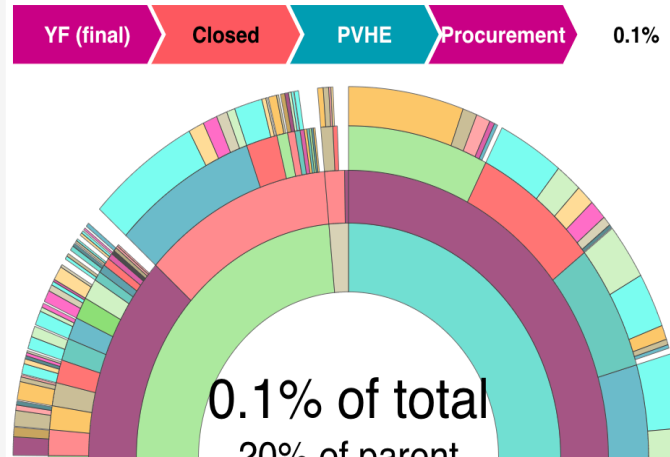
Corporate Data
Quality Management

Workflow Tracking Portal

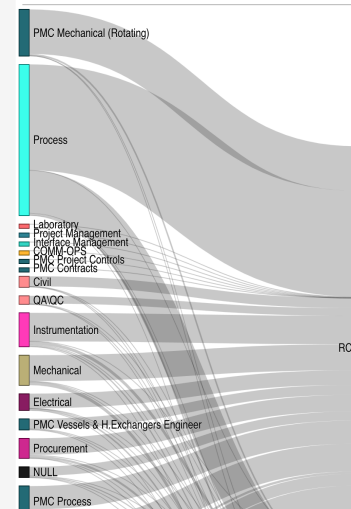
Comments Pivot Discipline by Status

Status	count		
	Closed	Open	All
Discipline			
PIPING MATERIAL MANAGEMENT	299	571	870
STARTUP MANAGERS	206	617	823
PVHE	470	66.0	536
SPARE PARTS COORDINATION	16.0	366	382
PROCUREMENT MANAGERS & COORDINATORS	159	211	370
MATERIAL SELECTION & CORROSION CONTROL	182	126	308
PIPING STRESS ANALYSIS	148	144	292
HEATERS AND BOILERS	137	135	272
CONSTRUCTION	54.0	158	212

Comments Sunburst Status by Discipline & Tag



Owner Response per Tag



Owner Response Pivot

Comment Initiator	Tag	Owner_Response	count
MIDOR	COMM-OPS	RC	4.00
	Civil	NULL	2.00
		AC	40.0
		NA	14.0
		RC	597
		RF	3.00
	Electrical	NULL	38.0
		AC	96.0
		AF	3.00
		NA	16.0
		RC	871
		RF	1.00
	HSE	AC	162
		NA	74.0
		RC	702
	Instrumentation	AC	3.00
		AC	83.0
		AF	7.00
		NA	181
		RC	1.69k
		RF	47.0
	Interface Management	RC	19.0
	Laboratory	RC	31.0
	Mechanical	NULL	1.00
		AC	188
		NA	34.0
		RC	1.54k

CUSTOM PROJECT PORTAL

- **Improved decision making** and better adherence to compliance requirements.
- **Guidelines for consistent document appearance**, notation and circulation can be developed for the organization.
- **Standards to maintain the integrity** of the organization's document control system can be easily created and made available for auditors when needed without stress.
- **The reduced risk** of delays, disputes and reworks.



Corporate Data
Quality Management

Some Technologies, Partner & Know How



ICT PARTNERS AND KNOW HOW





Corporate Data
Quality Management

Last Project References

- **SINGAPORE** - NESTE OIL: \$1,5 billions
Renewable Diesel Oil Plant
- **CZECH REPUBLIC** - UNIPETROL €250 millions
HDPE Unit - EPC
- **LIBYA** - MELLITAH OIL & GAS: \$500 millions
Bahr Essalam Phase II Topside Revamping
- **SLOVAKIA** - DUSLO: €250 millions
CPAVOK 4 Ammonia Plant

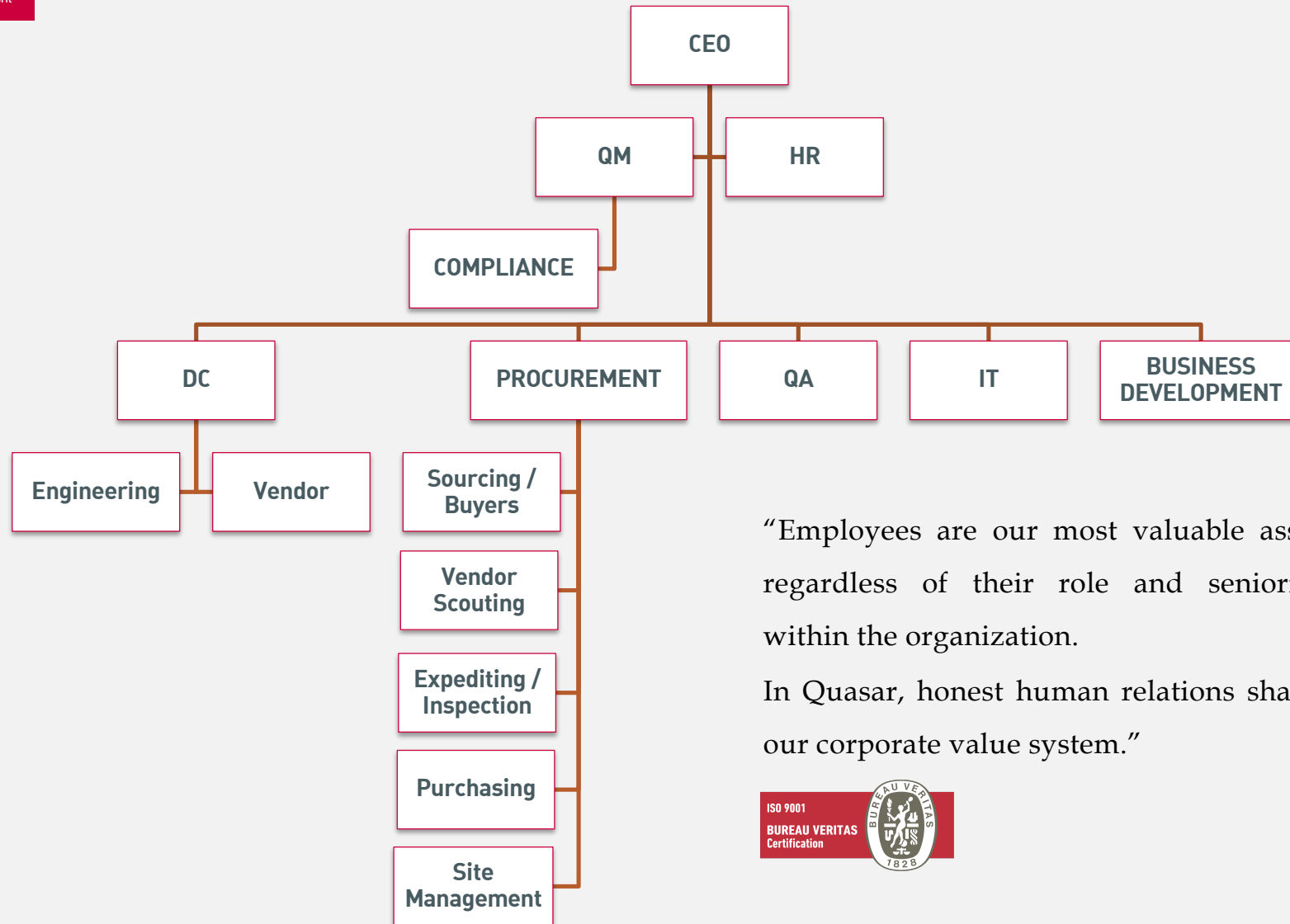
SOME RUNNING PROJECTS

- **AZERBAIJAN** SOCAR AZERIKIMYA PROD: \$50 millions
Azerikimya Modernization Project
- **BAHREIN** BAPCO: \$4.5 billions
Modernization Program - EPC
- **GREECE - ALBANIA - ITALY** \$250 millions
TRANS ADRIATIC PIPELINE AG (TAP):
Trans Adriatic Pipeline's - PMC
- **SAUDI ARABIA** - SAUDI ARAMCO BASE OIL:
\$3 billions
Expansion Project - FEED



Corporate Data
Quality Management

Organization Chart



“Employees are our most valuable asset regardless of their role and seniority within the organization.

In Quasar, honest human relations shape our corporate value system.”





Corporate Data
Quality Management

WORK SMARTER

Maria Adriana Gonzalez
Key Account Manager

m.gonzalez@quasarpm.com